



SINCE 1992

PASS BOX DYNAMIC

Page 01 - PASS BOX - Types.

Page 02 to Page 04- SELECTION of PASS BOX.

Page 05 & Page 06 - PASS BOX IMAGES.

Page 07 & 08 - DYNAMIC PASS BOX MILD STEEL STANDARD MODELS.

Page 09 & 10 - DYNAMIC PASS BOX STAINLESS STEEL 202 GRADE STANDARD MODELS.

Page 11 & 12 - DYNAMIC PASS BOX STAINLESS STEEL 304 GRADE STANDARD MODELS.

Page 13 & 14 - DYNAMIC PASS BOX MS & SS 202 STANDARD MODELS.

Page 15 & 16 - DYNAMIC PASS BOX MS & SS 304 STANDARD MODELS.

Page 17 - DYNAMIC PASS BOX COMPONENTS.

Page 18 - PASS BOX IMAGES.

Page 19 & 20 - DYNAMIC PASS BOX WEIGHT AND DOOR TYPES

SAM PRODUCTS (P) Ltd

Greater Noida 201 310, U.P., INDIA

9810065139

samproducts1992@gmail.com

samproducts25@gmail.com

www.samproducts.net

09AAKCS6327D1Z8

U51101UP2007PTC055433

PASS BOX - Types

PASS BOX, also known as TRANSFER HATCHES are normally used for Transfer of Material from One Sterilized Area to another or Transfer of Material from One Non Sterilized Area to Sterilized Area & visa versa. The Transfer thus can be between any two Levels of Cleanliness.

Transfer of Material from one Area to another using PASS BOX assists to avoid Air Flow from one area to another.

PASS BOX are broadly categorised as

01. STATIC PASS BOX (SPB).	Static Pass Box are Ideal for Locations wherein Air Flow is NOT required. This may be Two Areas of same Class Levels, thus for Non Sensitive or Fast Moving Products.
02. SEMI DYNAMIC PASS BOX (SDPB).	Semi Dynamic Pass Box due to its Flexibility, is used during construction of New Clean Room. SDPB is an application of 0.3 micron Filter & assists to achieve higher Class Level of Certification.
03. DYNAMIC PASS BOX (DPB)	Dynamic Pass Box are used for existing Clean Rooms of Different Class Levels or Pollution Levels.

PASS BOX may have similar features such as Mechanical or Electro Magnetic Door Interlocking, UV Lights, LED, Material of Construction of Cabinet, Floor Surface, etc. However some Differences may be as follows.

Sr No	STATIC PASS BOX	DYNAMIC PASS BOX
1	Static Pass Box are commonly used for Transfer of Material between Two Areas having same Clean Class Environments.	Dynamic Pass Box are preferred Transfer of Material for Two Non Clean Areas or Two Areas of Separate Class Levels.
2	Static Pass Box Doors may be simply Interlocked with LED to Indicate Door Open status.	Most of the Dynamic Pass Box have Both Interlocked Doors to avoid Exchange of Polluted Air during
3	Static Pass Box are designed for Air Lock to prevent ambient Air Entry.	Dynamic Pass Box are designed to have Suction Filter of 10 micron & Terminal Filter of 0.3 micron along
4	LED for Static Pass Box selected is 40W. LED glows only when the Door is Open.	LED for Dynamic Pass Box selected is 8W. LED glows only when the Door is Open.

SELECTION of PASS BOX

Sr No	Item	Description
1	Pass Box Size (Inside)	Size of Material to be passed through PASS BOX shall decide the Inner Size. Thus it is suggested Size of Pass Box at Inside should be atleast 150mm more on all sides than the Material Size.
2	Material of Construction (Cabinet)	Material of Construction used for Pass Box may be Mild Steel or Galvanised Sheet or Stainless Steel Grade (202 or 304 or 316). Material can also be mixed, such as Mild Steel or Galvanised Steel on Outside Skin & Stainless Steel on Inside Skin.
3	Types of Pass Box	Static Pass Box or Dynamic Pass Box is as per Class Level on either side of Pass Box. (a) Static Pass Box. (b) Semi Dynamic Pass Box. (c) Dynamic Pass Box.
4	Floor	Material weight or Volume shall decide the Type of Floor required.
5	Types of Floor	Floor to be provided can be (a) Customer Existing Floor. (b) Stainless Steel Floor - Plain Sheet. (c) Stainless Steel Floor suitable for Heavy Weights upto 300Kg. (d) MS Angle Grated Floor. (e) Water Tray Floor with Grating. (f) Manual Conveyor Type Floor. (g) Auto Conveyor Type Floor. (h) Manual SS Roller. (j) Auto SS Roller Floor. (k) Floor at Height. (l) Filters at Floor. (m) Track for Wheel Movement.
6	Available Space	Purchaser should check Space available for Pass Box placement.

SELECTION of PASS BOX (contd....)

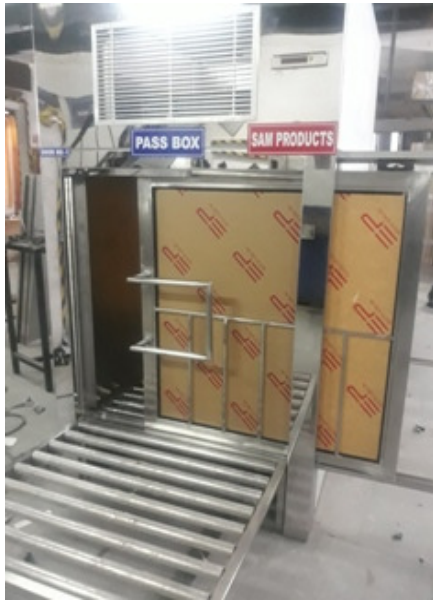
7	Door	Pass Box usually have Flushed Doors. Customer can select Type of Door.
8	Types of Door	Doors required may be
		(a) Single Leaf Hinged Door.
		(d) Double Leaf Hinged Door.
		(c) Single Leaf Manual Slide Door.
		(d) Double Leaf Manual Slide Door.
		(e) Single Leaf Auto Slide Door.
		(f) Double Leaf Auto Slide Door.
		(g) Auto Rolling Shutter.
		(h) Air Curtain (No Door).
		(i) PVC Strip Curtain (No Door).
9	MOC of Door	Door MOC may vary from End Use to End Use. Customer can select from following Options or provide other Options to incorporate.
		(a) Mild Steel Sheet Door (without View Glass).
		(b) Mild Steel Pipe Frame Door (with Top Half as View Glass).
		(c) Mild Steel Pipe Frame Door (all Glass).
		(d) Stainless Steel Sheet Door (without View Glass).
		(e) Stainless Steel Pipe Frame Door (with Top Half as View Glass).
		(f) Stainless Steel Pipe Frame Door (all Glass).
		(g) Rolling Door with Canvas/ Aluminium.
		(h) PVC Strip Curtains at Opening.
		(i) Air Curtain at Opening.
10	Input Power Supply	Input Power Supply may vary as per Size of Pass Box.
		(a) Single Phase, 220V, 50Hz.
		(b) Three Phase, 440V, 50Hz.
11	Air Leak Tight	Some Applications require Air Leak Tight Doors. Application Share by Customer during Design stage shall assist to Select suitable Product.
12	Maintenance	Easy Maintenance of Pass Box as and when required. Suggested Maintenance from Non Clean Area.

SELECTION of PASS BOX (contd...)

13	Door Interlocking	Door Interlocking at both sides ensures any one Door may be Open at any given time.
14	High Volume Transfer or Heavy Weight	Transfer of High Volume Item or Heavy Weight Item thru Pass Box may require Thick Sheets on the Wall. We at Sam Products select most suitable Material to ensure Long Life Performance.
15	UV Light	Germicidal and UV Light can be Installed in the Pass Box for Increased Protection. UV Light assists to destroy DNA Pathogens. Hour Meter along with UV Light is suggested.
16	Meter	Inclined Tube Manometer or Magnehelic Differential Pressure Gauge or may be used for Low Differential Pressures.
17	Door Accessories	Accessories include Door Handle/ Door Hinge/ Door Closer/ View Glass/ Door brush/ etc.
18	Internal Covings	Internal Covings may be PVC or SS.
19	Door Unlock	Options for Door Unlock Include
		(a) Door Handle.
		(b) Numeric Lock.
		(c) Biometric Authentication.
		(d) Motion Sensor.
		(e) Release Switch.
		(f) Beam Sensor.
20	Install Support	Installation Support may Include
		(a) Mild Steel (or Stainless Steel) Pipe Frame.
		(b) Three Sided Wall Structure.
		(c) Slide Channel for Slide Door.
		(d) Half Height Barrier at Exit Door.
		(e) Remote ON/ OFF.
		(f) Audio Vedio during Material Transfer.
		(g) Incoming Power Termination from Top.
		(h) Alarm/ Hooter/ Music during Door Open.
		(i) Light/ LED "ON" during Door Open.
(j) Gap Closing between Pass Box & Wall/ Ceiling/ Floor.		



PASS BOX IMAGES



PASS BOX IMAGES



PASS BOX DYNAMIC

Material of Construction (Cabinet) - Mild Steel.

MODEL	SIZE (ID)			SIZE (OD)		
	W	D	H	W	D	H
SPD36	450	450	450	550	520	1000
SPD37	600	600	600	800	730	1150
SPD38	600	600	900	800	730	1450
SPD39	600	600	1200	800	730	1750
SPD40	600	600	1800	1270	730	1950
SPD41	600	900	600	800	1030	1150
SPD42	600	900	900	800	1030	1450
SPD43	600	900	1200	800	1030	1750
SPD44	600	900	1800	900	970	2400
SPD45	600	1200	600	800	1270	1200
SPD46	600	1200	900	800	1270	1500
SPD47	600	1200	1200	800	1270	1800
SPD48	600	1200	1800	900	1270	2400
SPD49	600	1800	600	800	1870	1200
SPD50	600	1800	900	800	1870	1500
SPD51	600	1800	1200	800	1870	1800
SPD52	600	1800	1800	900	1870	2400
SPD53	900	600	600	1100	670	1200
SPD54	900	600	900	1100	670	1500
SPD55	900	600	1200	1100	670	1800
SPD56	900	600	1800	1200	670	2400
SPD57	900	900	600	1100	970	1200
SPD58	900	900	900	1100	1030	1500
SPD59	900	900	1200	1100	1030	1800
SPD60	900	900	1800	1200	1030	2400
SPD61	900	1200	600	1100	1030	1200
SPD62	900	1200	900	1100	1270	1500
SPD63	900	1200	1200	1100	1270	1800
SPD64	900	1800	1800	1200	1270	2400
SPD65	900	1800	600	1100	1930	1200
SPD66	900	1800	900	1100	1930	1500

	W	D	H	W	D	H
SPD67	900	1800	1200	1100	1930	1800
SPD68	900	1800	1800	1200	1930	2400
SPD69	1200	600	600	1400	730	1200
SPD70	1200	600	900	1400	730	1500
SPD71	1200	600	1200	1400	730	1800
SPD72	1200	600	1800	1500	670	2400
SPD73	1200	900	600	1400	1030	1200
SPD74	1200	900	900	1400	1030	1500
SPD75	1200	900	1800	1500	1030	2400
SPD76	1200	1200	600	1400	1270	1200
SPD77	1200	1200	900	1400	1270	1500
SPD78	1200	1200	1200	1500	1270	1800
SPD79	1200	1200	1800	1500	1270	2400
SPD80	1200	1500	600	1400	1570	1200
SPD81	1200	1500	900	1400	1570	1500
SPD82	1200	1500	1200	1500	1570	1800
SPD83	1200	1500	1800	1500	1570	2400
SPD84	1800	600	600	2100	730	1200
SPD85	1800	600	900	2100	730	1500
SPD86	1800	600	1200	2100	730	1800
SPD87	1800	600	1800	2100	730	2400
SPD88	1800	900	600	2100	1030	1200
SPD89	1800	900	900	2100	1030	1500
SPD90	1800	900	1200	2100	1030	1800
SPD91	1800	900	1800	2100	970	2400
SPD92	1800	1200	600	2100	1270	1200
SPD93	1800	1200	900	2100	1270	1500
SPD94	1800	1200	1200	2100	1270	1800
SPD95	1800	1200	1800	2100	1270	2400
SPD96	1800	1800	600	2100	1870	1200
SPD97	1800	1800	900	2100	1870	1500
SPD98	1800	1800	1200	2100	1870	1800
SPD99	1800	1800	1800	2100	1870	2400

PASS BOX DYNAMIC

Material of Construction (Cabinet) - Stainless Steel 202 Grade.

MODEL	SIZE (ID)			SIZE (OD)		
	W	D	H	W	D	H
SPD36S	450	450	450	550	520	1000
SPD37S	600	600	600	800	730	1150
SPD38S	600	600	900	800	730	1450
SPD39S	600	600	1200	800	730	1750
SPD40S	600	600	1800	1270	730	1950
SPD41S	600	900	600	800	1030	1150
SPD42S	600	900	900	800	1030	1450
SPD43S	600	900	1200	800	1030	1750
SPD44S	600	900	1800	900	970	2400
SPD45S	600	1200	600	800	1270	1200
SPD46S	600	1200	900	800	1270	1500
SPD47S	600	1200	1200	800	1270	1800
SPD48S	600	1200	1800	900	1270	2400
SPD49S	600	1800	600	800	1870	1200
SPD50S	600	1800	900	800	1870	1500
SPD51S	600	1800	1200	800	1870	1800
SPD52S	600	1800	1800	900	1870	2400
SPD53S	900	600	600	1100	670	1200
SPD54S	900	600	900	1100	670	1500
SPD55S	900	600	1200	1100	670	1800
SPD56S	900	600	1800	1200	670	2400
SPD57S	900	900	600	1100	970	1200
SPD58S	900	900	900	1100	1030	1500
SPD59S	900	900	1200	1100	1030	1800
SPD60S	900	900	1800	1200	1030	2400
SPD61S	900	1200	600	1100	1030	1200
SPD62S	900	1200	900	1100	1270	1500
SPD63S	900	1200	1200	1100	1270	1800
SPD64S	900	1800	1800	1200	1270	2400
SPD65S	900	1800	600	1100	1930	1200
SPD66S	900	1800	900	1100	1930	1500

	W	D	H	W	D	H
SPD67S	900	1800	1200	1100	1930	1800
SPD68S	900	1800	1800	1200	1930	2400
SPD69S	1200	600	600	1400	730	1200
SPD70S	1200	600	900	1400	730	1500
SPD71S	1200	600	1200	1400	730	1800
SPD72S	1200	600	1800	1500	670	2400
SPD73S	1200	900	600	1400	1030	1200
SPD74S	1200	900	900	1400	1030	1500
SPD75S	1200	900	1800	1500	1030	2400
SPD76S	1200	1200	600	1400	1270	1200
SPD77S	1200	1200	900	1400	1270	1500
SPD78S	1200	1200	1200	1500	1270	1800
SPD79S	1200	1200	1800	1500	1270	2400
SPD80S	1200	1500	600	1400	1570	1200
SPD81S	1200	1500	900	1400	1570	1500
SPD82S	1200	1500	1200	1500	1570	1800
SPD83S	1200	1500	1800	1500	1570	2400
SPD84S	1800	600	600	2100	730	1200
SPD85S	1800	600	900	2100	730	1500
SPD86S	1800	600	1200	2100	730	1800
SPD87S	1800	600	1800	2100	730	2400
SPD88S	1800	900	600	2100	1030	1200
SPD89S	1800	900	900	2100	1030	1500
SPD90S	1800	900	1200	2100	1030	1800
SPD91S	1800	900	1800	2100	970	2400
SPD92S	1800	1200	600	2100	1270	1200
SPD93S	1800	1200	900	2100	1270	1500
SPD94S	1800	1200	1200	2100	1270	1800
SPD95S	1800	1200	1800	2100	1270	2400
SPD96S	1800	1800	600	2100	1870	1200
SPD97S	1800	1800	900	2100	1870	1500
SPD98S	1800	1800	1200	2100	1870	1800
SPD99S	1800	1800	1800	2100	1870	2400

PASS BOX DYNAMIC

Material of Construction (Cabinet) - Stainless Steel 304 Grade.

MODEL	SIZE (ID)			SIZE (OD)		
	W	D	H	W	D	H
SPD36S3	450	450	450	550	520	1000
SPD37S3	600	600	600	800	730	1150
SPD38S3	600	600	900	800	730	1450
SPD39S3	600	600	1200	800	730	1750
SPD40S3	600	600	1800	1270	730	1950
SPD41S3	600	900	600	800	1030	1150
SPD42S3	600	900	900	800	1030	1450
SPD43S3	600	900	1200	800	1030	1750
SPD44S3	600	900	1800	900	970	2400
SPD45S3	600	1200	600	800	1270	1200
SPD46S3	600	1200	900	800	1270	1500
SPD47S3	600	1200	1200	800	1270	1800
SPD48S3	600	1200	1800	900	1270	2400
SPD49S3	600	1800	600	800	1870	1200
SPD50S3	600	1800	900	800	1870	1500
SPD51S3	600	1800	1200	800	1870	1800
SPD52S3	600	1800	1800	900	1870	2400
SPD53S3	900	600	600	1100	670	1200
SPD54S3	900	600	900	1100	670	1500
SPD55S3	900	600	1200	1100	670	1800
SPD56S3	900	600	1800	1200	670	2400
SPD57S3	900	900	600	1100	970	1200
SPD58S3	900	900	900	1100	1030	1500
SPD59S3	900	900	1200	1100	1030	1800
SPD60S3	900	900	1800	1200	1030	2400
SPD61S3	900	1200	600	1100	1030	1200
SPD62S3	900	1200	900	1100	1270	1500
SPD63S3	900	1200	1200	1100	1270	1800
SPD64S3	900	1800	1800	1200	1270	2400
SPD65S3	900	1800	600	1100	1930	1200
SPD66S3	900	1800	900	1100	1930	1500

	W	D	H	W	D	H
SPD67S3	900	1800	1200	1100	1930	1800
SPD68S3	900	1800	1800	1200	1930	2400
SPD69S3	1200	600	600	1400	730	1200
SPD70S3	1200	600	900	1400	730	1500
SPD71S3	1200	600	1200	1400	730	1800
SPD72S3	1200	600	1800	1500	670	2400
SPD73S3	1200	900	600	1400	1030	1200
SPD74S3	1200	900	900	1400	1030	1500
SPD75S3	1200	900	1800	1500	1030	2400
SPD76S3	1200	1200	600	1400	1270	1200
SPD77S3	1200	1200	900	1400	1270	1500
SPD78S3	1200	1200	1200	1500	1270	1800
SPD79S3	1200	1200	1800	1500	1270	2400
SPD80S3	1200	1500	600	1400	1570	1200
SPD81S3	1200	1500	900	1400	1570	1500
SPD82S3	1200	1500	1200	1500	1570	1800
SPD83S3	1200	1500	1800	1500	1570	2400
SPD84S3	1800	600	600	2100	730	1200
SPD85S3	1800	600	900	2100	730	1500
SPD86S3	1800	600	1200	2100	730	1800
SPD87S3	1800	600	1800	2100	730	2400
SPD88S3	1800	900	600	2100	1030	1200
SPD89S	1800	900	900	2100	1030	1500
SPD90S3	1800	900	1200	2100	1030	1800
SPD91S3	1800	900	1800	2100	970	2400
SPD92S3	1800	1200	600	2100	1270	1200
SPD93S3	1800	1200	900	2100	1270	1500
SPD94S3	1800	1200	1200	2100	1270	1800
SPD95S3	1800	1200	1800	2100	1270	2400
SPD96S3	1800	1800	600	2100	1870	1200
SPD97S3	1800	1800	900	2100	1870	1500
SPD98S3	1800	1800	1200	2100	1870	1800
SPD99S3	1800	1800	1800	2100	1870	2400

PASS BOX DYNAMIC

Material of Construction (Cabinet) - Mild Steel (Outside Skin) & Stainless Steel 202 Grade (Inside Skin).

MODEL	SIZE (ID)			SIZE (OD)		
	W	D	H	W	D	H
SPD36SM	450	450	450	550	520	1000
SPD37SM	600	600	600	800	730	1150
SPD38SM	600	600	900	800	730	1450
SPD39SM	600	600	1200	800	730	1750
SPD40SM	600	600	1800	1270	730	1950
SPD41SM	600	900	600	800	1030	1150
SPD42SM	600	900	900	800	1030	1450
SPD43SM	600	900	1200	800	1030	1750
SPD44SM	600	900	1800	900	970	2400
SPD45SM	600	1200	600	800	1270	1200
SPD46SM	600	1200	900	800	1270	1500
SPD47SM	600	1200	1200	800	1270	1800
SPD48SM	600	1200	1800	900	1270	2400
SPD49SM	600	1800	600	800	1870	1200
SPD50SM	600	1800	900	800	1870	1500
SPD51SM	600	1800	1200	800	1870	1800
SPD52SM	600	1800	1800	900	1870	2400
SPD53SM	900	600	600	1100	670	1200
SPD54SM	900	600	900	1100	670	1500
SPD55SM	900	600	1200	1100	670	1800
SPD56SM	900	600	1800	1200	670	2400
SPD57SM	900	900	600	1100	970	1200
SPD58SM	900	900	900	1100	1030	1500
SPD59SM	900	900	1200	1100	1030	1800
SPD60SM	900	900	1800	1200	1030	2400
SPD61SM	900	1200	600	1100	1030	1200
SPD62SM	900	1200	900	1100	1270	1500
SPD63SM	900	1200	1200	1100	1270	1800
SPD64SM	900	1800	1800	1200	1270	2400
SPD65SM	900	1800	600	1100	1930	1200
SPD66SM	900	1800	900	1100	1930	1500

	W	D	H	W	D	H
SPD67SM	900	1800	1200	1100	1930	1800
SPD68SM	900	1800	1800	1200	1930	2400
SPD69SM	1200	600	600	1400	730	1200
SPD70SM	1200	600	900	1400	730	1500
SPD71SM	1200	600	1200	1400	730	1800
SPD72SM	1200	600	1800	1500	670	2400
SPD73SM	1200	900	600	1400	1030	1200
SPD74SM	1200	900	900	1400	1030	1500
SPD75SM	1200	900	1800	1500	1030	2400
SPD76SM	1200	1200	600	1400	1270	1200
SPD77SM	1200	1200	900	1400	1270	1500
SPD78SM	1200	1200	1200	1500	1270	1800
SPD79SM	1200	1200	1800	1500	1270	2400
SPD80SM	1200	1500	600	1400	1570	1200
SPD81SM	1200	1500	900	1400	1570	1500
SPD82SM	1200	1500	1200	1500	1570	1800
SPD83SM	1200	1500	1800	1500	1570	2400
SPD84SM	1800	600	600	2100	730	1200
SPD85SM	1800	600	900	2100	730	1500
SPD86SM	1800	600	1200	2100	730	1800
SPD87SM	1800	600	1800	2100	730	2400
SPD88SM	1800	900	600	2100	1030	1200
SPD89SM	1800	900	900	2100	1030	1500
SPD90SM	1800	900	1200	2100	1030	1800
SPD91SM	1800	900	1800	2100	970	2400
SPD92SM	1800	1200	600	2100	1270	1200
SPD93SM	1800	1200	900	2100	1270	1500
SPD94SM	1800	1200	1200	2100	1270	1800
SPD95SM	1800	1200	1800	2100	1270	2400
SPD96SM	1800	1800	600	2100	1870	1200
SPD97SM	1800	1800	900	2100	1870	1500
SPD98SM	1800	1800	1200	2100	1870	1800
SPD99SM	1800	1800	1800	2100	1870	2400

PASS BOX DYNAMIC

Material of Construction (Cabinet) - Mild Steel (Outside Skin) & Stainless Steel 304 Grade (Inside Skin).

MODEL	SIZE (ID)			SIZE (OD)		
	W	D	H	W	D	H
SPD36S3M	450	450	450	550	520	1000
SPD37S3M	600	600	600	800	730	1150
SPD38S3M	600	600	900	800	730	1450
SPD39S3M	600	600	1200	800	730	1750
SPD40S3M	600	600	1800	1270	730	1950
SPD41S3M	600	900	600	800	1030	1150
SPD42S3M	600	900	900	800	1030	1450
SPD43S3M	600	900	1200	800	1030	1750
SPD44S3M	600	900	1800	900	970	2400
SPD45S3M	600	1200	600	800	1270	1200
SPD46S3M	600	1200	900	800	1270	1500
SPD47S3M	600	1200	1200	800	1270	1800
SPD48S3M	600	1200	1800	900	1270	2400
SPD49S3M	600	1800	600	800	1870	1200
SPD50S3M	600	1800	900	800	1870	1500
SPD51S3M	600	1800	1200	800	1870	1800
SPD52S3M	600	1800	1800	900	1870	2400
SPD53S3M	900	600	600	1100	670	1200
SPD54S3M	900	600	900	1100	670	1500
SPD55S3M	900	600	1200	1100	670	1800
SPD56S3M	900	600	1800	1200	670	2400
SPD57S3M	900	900	600	1100	970	1200
SPD58S3M	900	900	900	1100	1030	1500
SPD59S3M	900	900	1200	1100	1030	1800
SPD60S3M	900	900	1800	1200	1030	2400
SPD61S3M	900	1200	600	1100	1030	1200
SPD62S3M	900	1200	900	1100	1270	1500
SPD63S3M	900	1200	1200	1100	1270	1800
SPD64S3M	900	1800	1800	1200	1270	2400
SPD65S3M	900	1800	600	1100	1930	1200
SPD66S3M	900	1800	900	1100	1930	1500

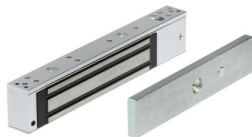
	W	D	H	W	D	H
SPD67S3M	900	1800	1200	1100	1930	1800
SPD68S3M	900	1800	1800	1200	1930	2400
SPD69S3M	1200	600	600	1400	730	1200
SPD70S3M	1200	600	900	1400	730	1500
SPD71S3M	1200	600	1200	1400	730	1800
SPD72S3M	1200	600	1800	1500	670	2400
SPD73S3M	1200	900	600	1400	1030	1200
SPD74S3M	1200	900	900	1400	1030	1500
SPD75S3M	1200	900	1800	1500	1030	2400
SPD76S3M	1200	1200	600	1400	1270	1200
SPD77S3M	1200	1200	900	1400	1270	1500
SPD78S3M	1200	1200	1200	1500	1270	1800
SPD79S3M	1200	1200	1800	1500	1270	2400
SPD80S3M	1200	1500	600	1400	1570	1200
SPD81S3M	1200	1500	900	1400	1570	1500
SPD82S3M	1200	1500	1200	1500	1570	1800
SPD83S3M	1200	1500	1800	1500	1570	2400
SPD84S3M	1800	600	600	2100	730	1200
SPD85S3M	1800	600	900	2100	730	1500
SPD86S3M	1800	600	1200	2100	730	1800
SPD87S3M	1800	600	1800	2100	730	2400
SPD88S3M	1800	900	600	2100	1030	1200
SPD89S3M	1800	900	900	2100	1030	1500
SPD90S3M	1800	900	1200	2100	1030	1800
SPD91S3M	1800	900	1800	2100	970	2400
SPD92S3M	1800	1200	600	2100	1270	1200
SPD93S3M	1800	1200	900	2100	1270	1500
SPD94S3M	1800	1200	1200	2100	1270	1800
SPD95S3M	1800	1200	1800	2100	1270	2400
SPD96S3M	1800	1800	600	2100	1870	1200
SPD97S3M	1800	1800	900	2100	1870	1500
SPD98S3M	1800	1800	1200	2100	1870	1800
SPD99S3M	1800	1800	1800	2100	1870	2400

PASS BOX COMPONENTS

STANDARD COMPONENTS - PASS BOX - DYNAMIC



1. Release Switch.
2. Emergency Release Switch.
3. UV Light.
4. Hour Meter.
5. Display Panel.
6. Fluorescent LED Fixtures.
7. Strong Hinged/ Sliding Doors with View Glass.
8. Micro Processor Panel.
9. Access Panel for Easy Maintenance.
10. Electric Interlocking for Doors.



OPTIONAL COMPONENTS - PASS BOX

1. Epoxy Painted Cold Rolled Steel and Stainless Steel.
2. Safety Plate Glass Doors.
3. Maghnelic Gauge HEPA Filters.
4. Standby Air Flow.
5. Ceiling Mounted HEPA filter for constant Laminar Flow.
6. Raised Floor Grated Return.
7. Toughened Glass.
8. Flame Proof Construction/ Motor.
9. CCTV Provision.
10. Air Curtain/ PVC Strip Curtain at Entrance.



In line with our policy of Continual Product Improvement, we at SAM PRODUCTS Pvt Ltd reserve the right to incorporate and use equipment and material to conform to the latest Design of our Products while maintaining the specifications of the Equipment.

Material Supply shall be as per our Quote. Please add Items as may be required at your end before raising your PO.

Dimensions are for Information Only. For exact Dimension, please write to us at samproducts1992@gmail.com.

PASS BOX IMAGES



Last Rev : 18.12.2019

PASS BOX WEIGHT & DOOR TYPES

Material of Construction (Cabinet) - Mild Steel.

MODEL	Weight (Kg)	Type of Door
SPD36	90	SD
SPD37	90	SD
SPD38	120	SD
SPD39	180	SD
SPD40	120	SD
SPD41	130	SD
SPD42	150	SD
SPD43	190	SD
SPD44	120	SD
SPD45	150	SD
SPD46	150	SD
SPD47	190	SD
SPD48	150	SD
SPD49	150	SD
SPD50	170	SD
SPD51	360	SD
SPD52	150	SD
SPD53	150	SD
SPD54	150	SD
SPD55	250	SD
SPD56	150	SD
SPD57	150	SD
SPD58	160	SD
SPD59	240	SD
SPD60	160	SD
SPD61	180	SD
SPD62	180	SD
SPD63	250	SD
SPD64	280	SD
SPD65	300	SD
SPD66	300	SD

SD = Single Leaf Hinged Door

MD = Manual Slide Single Leaf Door

HSD = High Speed Door

PASS BOX WEIGHT & DOOR TYPES

Material of Construction (Cabinet) - Mild Steel.

MODEL	Weight (Kg)	Type of Door
SPD67	350	SD
SPD68	180	MD
SPD69	190	MD
SPD70	190	MD
SPD71	240	MD
SPD72	180	MD
SPD73	190	MD
SPD74	190	MD
SPD75	240	MD
SPD76	210	MD
SPD77	230	MD
SPD78	240	MD
SPD79	270	MD
SPD80	220	MD
SPD81	240	MD
SPD82	240	MD
SPD83	350	MD
SPD84	210	MD
SPD85	240	MD
SPD86	240	MD
SPD87	310	HSD
SPD88	210	MD
SPD89	210	MD
SPD90	220	MD
SPD91	380	HSD
SPD92	250	MD
SPD93	270	MD
SPD94	290	MD
SPD95	380	HSD
SPD96	320	MD
SPD97	340	MD
SPD98	360	MD
SPD99	390	HSD

SD = Single Leaf Hinged Door
 MD = Manual Slide Single Leaf Door
 HSD = High Speed Door

Last Updated on 19.11.2021